

# **S32K SDK ISELED BETA 3.9.0 Driver Installation Guide**



# Contents

1.	INTRODUCTION.....	3
2.	DOWNLOADING THE S32 DESIGN STUDIO IDE.....	3
3.	UPDATING THE S32 SOFTWARE DEVELOPMENT KIT .....	8
4.	INSTALLATION OF S32K SDK ISELED DRIVER .....	12
5.	TROUBLESHOOTING .....	21
2.	STARTING FROM S32K SDK ISELED EXAMPLE APPLICATION .....	24

# 1. Introduction

This user guide describes in detail the steps to install the necessary components to build the customer application using the NXP S32K SDK ISELED BETA 3.9.0 driver.

The S32 Software Development Kit (S32 SDK) is part of the S32 Design Studio (S32DS), representing the tool suite for developing of user applications for NXP Automotive and Ultra-Reliable microcontrollers. S32K SDK ISELED driver is not integrated as part of standard S32SDK installation, thus a few steps need to be done to download and integrate the S32SDK ISELED driver into the application.

The 3 software packages that need to be installed are: S32 Design Studio, S32 SDK and SDK ISELED Driver.

## 2. Downloading the S32 Design Studio IDE

The S32 Design Studio IDE is a complimentary integrated development environment for Automotive and Ultra-Reliable Arm based MCUs that enables editing, compiling and debugging of applications. Based on, open-source software including Eclipse IDE, GNU Compiler Collection (GCC) and GNU Debugger (GDB), the S32 Design Studio IDE offers designers a straightforward development tool with no code-size limitations. NXP software, along with the S32 Design Studio IDE provide a comprehensive enablement environment that reduces development time.

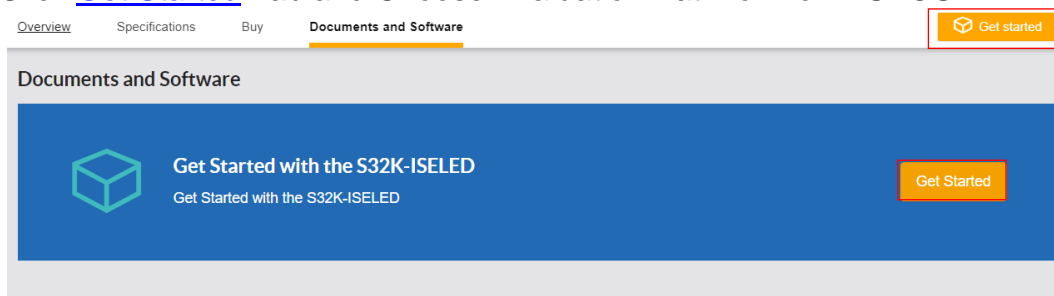
### NOTE

Despite this document might refer to particular revision of NXP SW, it is highly recommended to use the latest available versions of the SW. Those versions might not be listed in the screenshots presented in this document at the time of creation.

The screenshots are example screenshot from RTM 3.0.0 release

In order to download the S32 Design Studio IDE, please follow these steps:

1. Visit the [www.nxp.com/S32K-ISELED](http://www.nxp.com/S32K-ISELED)
2. Click [Get Started](#) Tab and Choose Evaluation Path for Non-AUTOSAR



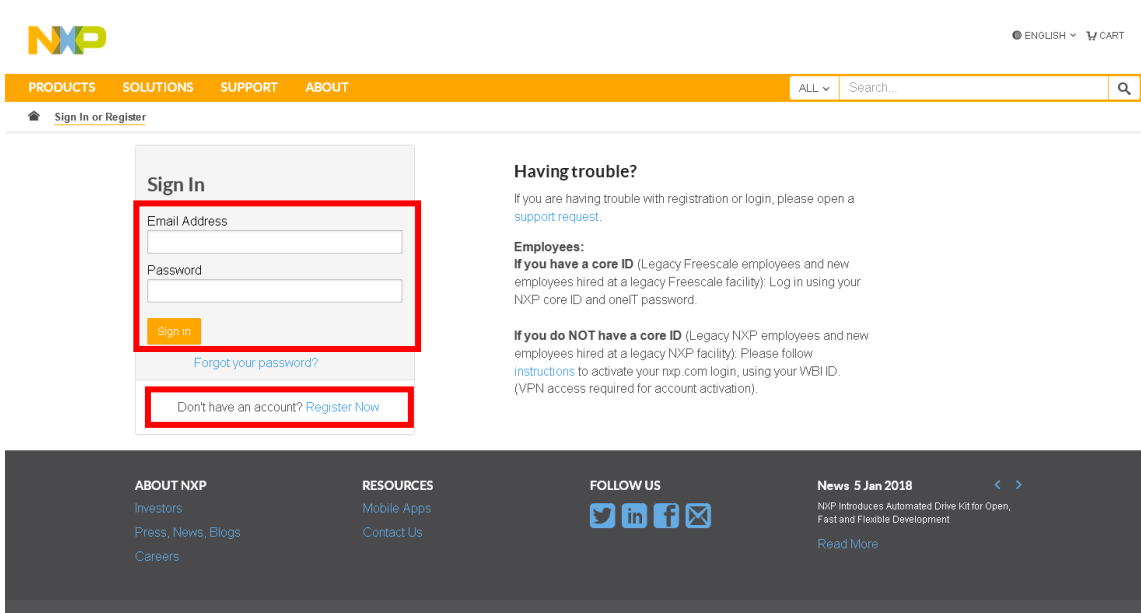
3. Download Design Studio for ARM 2018.R1 (or newer) for ARM® based MCUs:
2. Download the S32 SDK ISELED driver Installation Guide

The step-by-step guide to integrate the S32 SDK ISELED driver into the S32 Design Studio.

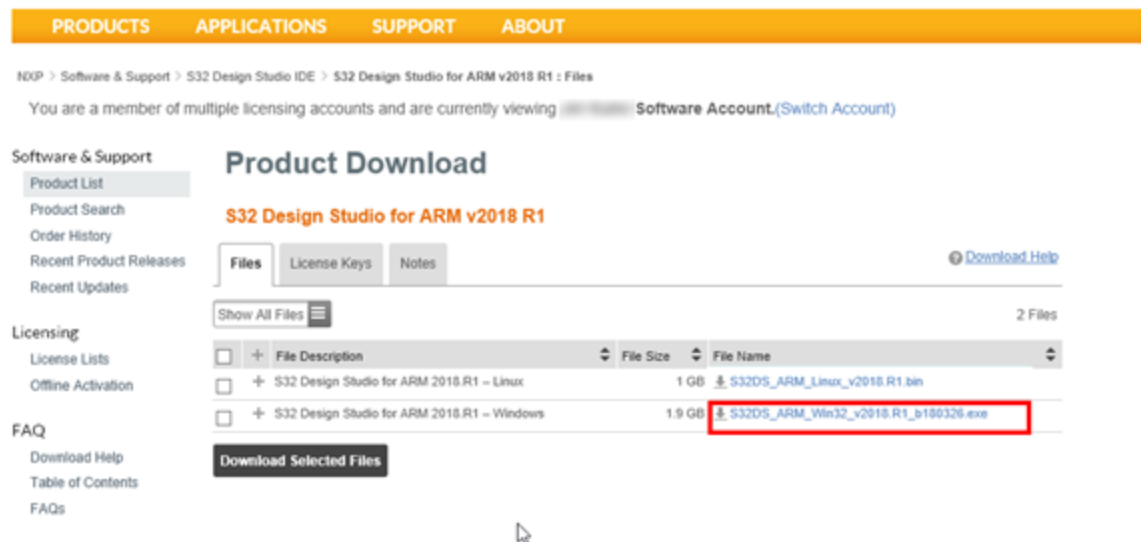
[Download S32 SDK ISELED driver Installation Guide](#)

Alternatively, download link could also be found via [www.nxp.com/S32K-ISELED](http://www.nxp.com/S32K-ISELED) Documents and Software Tab.

4. To proceed with the download, the user needs to be logged-in using the user account. In case of new user, please proceed with the Register Now option prior logging into the NXP web page.



- Download the installation package of S32 Design Studio by selecting appropriate version, based on the operation system on your PC. After download, follow the instruction of the Installation shield to proceed.



- During the installation of the S32 Design Studio IDE, an Activation code and the license file need to be stored on your computer.



NXP > Software & Support > S32 Design Studio IDE > S32 Design Studio for ARM v2018 R1 : Files

You are a member of multiple licensing accounts and are currently viewing Software Account.(Switch Account)

Software & Support

- Product List
- Product Search
- Order History
- Recent Product Releases
- Recent Updates

Licensing

- License Lists
- Offline Activation

FAQ

- Download Help
- Table of Contents
- FAQs

## Product Download

### S32 Design Studio for ARM v2018 R1

Files License Keys Notes [Download Help](#)

Show All Files 2 Files

<input type="checkbox"/>	+	File Description	File Size	File Name
<input type="checkbox"/>	+	S32 Design Studio for ARM 2018.R1 – Linux	1 GB	<a href="#">S32DS_ARM_Linux_v2018.R1.bin</a>
<input type="checkbox"/>	+	S32 Design Studio for ARM 2018.R1 – Windows	1.9 GB	<a href="#">S32DS_ARM_Win32_v2018.R1_b180326.exe</a>

Download Selected Files



NXP > Software & Support > License Information

You are a member of multiple licensing accounts and are currently viewing Software Account.(Switch Account)

Software & Support

- Product List
- Product Search
- Order History
- Recent Product Releases
- Recent Updates

Licensing

- License Lists
- Offline Activation

FAQ

- Download Help
- Table of Contents
- FAQs

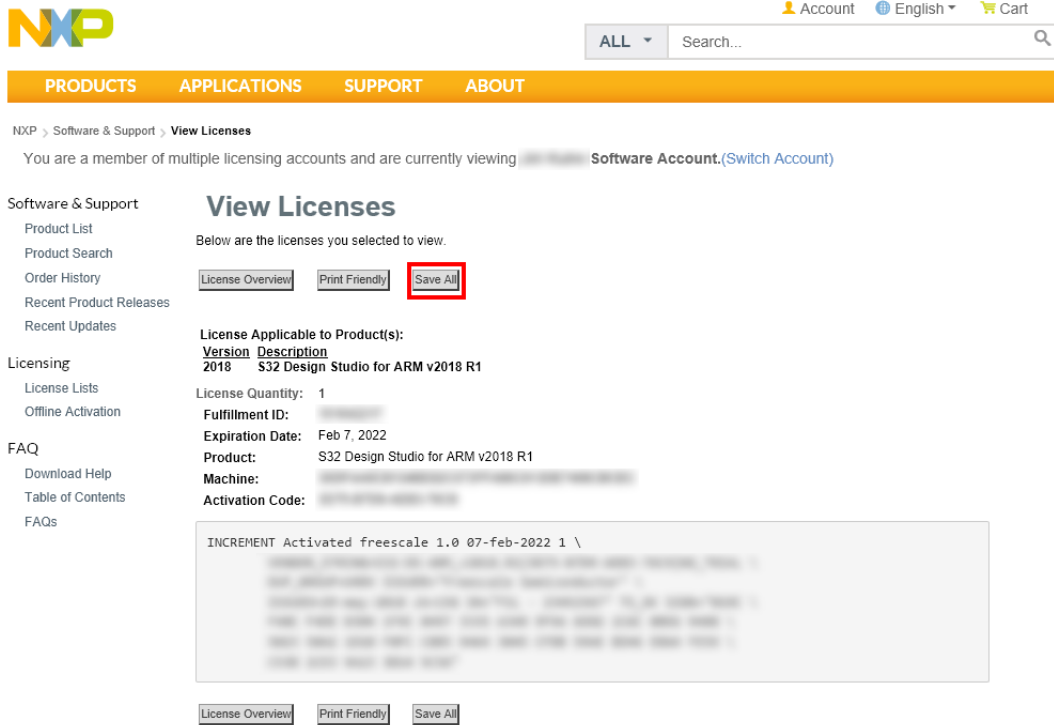
## License Information

### S32 Design Studio for ARM v2018 R1

View

<b>Item Description</b>	<b>S32 Design Studio for ARM v2018</b>
Order Number	S32-DS-ARM_v2018_66796877
Purchase Order Number	
Total Number of Licenses:	100
Activation Code	
License Applicable to Product(s):	
<u>Version</u>	<u>Description</u>
2018	S32 Design Studio for ARM v2018 R1 ( <a href="#">View EULA</a> )
99 Available	
License Quantity:	1
Fulfillment ID:	151642217
Expiration Date:	Feb 7, 2022
Product:	S32 Design Studio for ARM v2018 R1 <input checked="" type="checkbox"/>
Machine:	
Activation Code:	

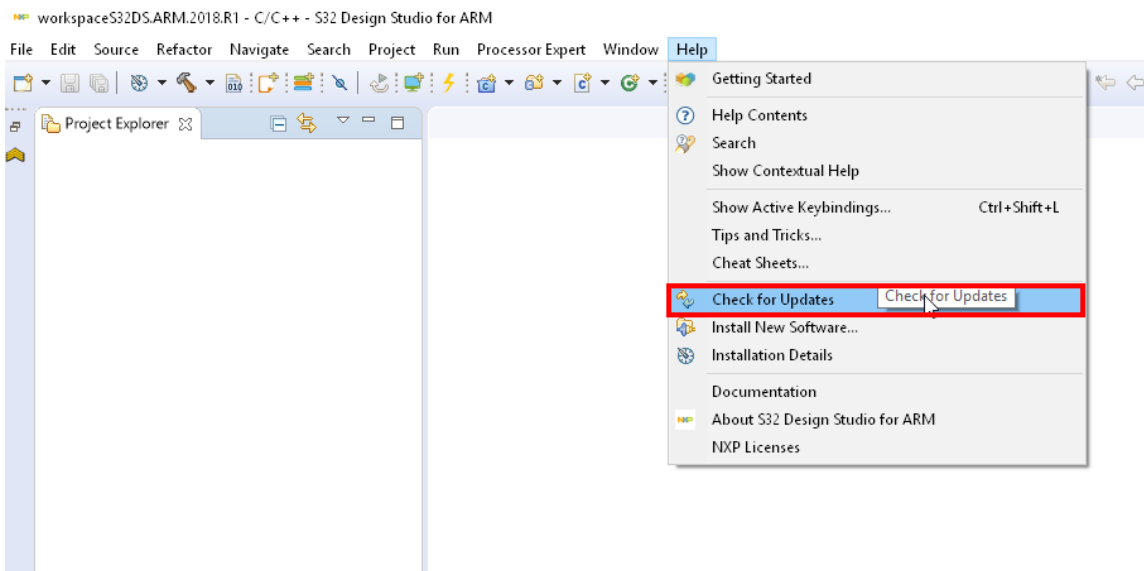
View



After successfully installing S32 Design Studio it's necessary to update the S32 Software Development Kit (S32SDK), which comes pre-installed with the S32 Design Studio. To proceed, please follow the instructions in next chapter.

### NOTE

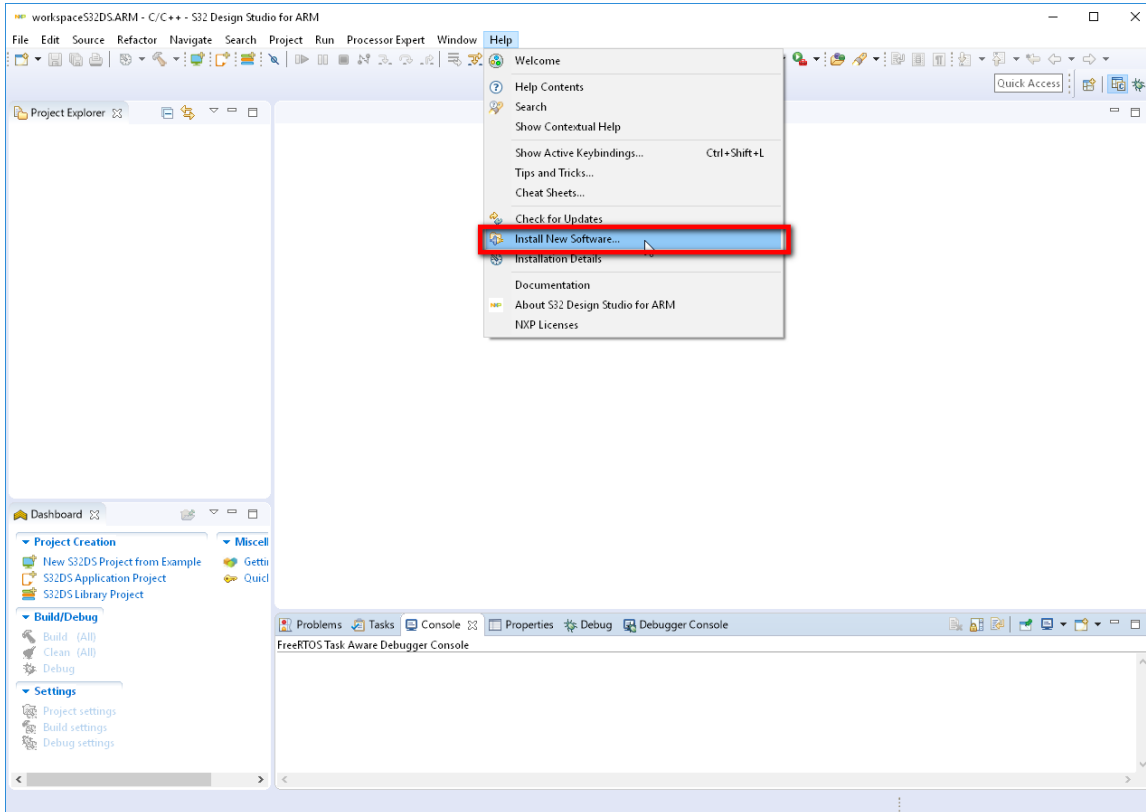
If you already have the S32 Design Studio installed on your computer, please make sure you update your installation, prior proceeding to next chapter.



### 3. Updating the S32 Software Development Kit

The S32 Software Development Kit (S32 SDK) is an extensive suite of robust hardware interface and hardware abstraction layers, peripheral drivers, RTOS, stacks, and middleware designed to simplify and accelerate application development on NXP S32K microcontrollers. As the S32K SDK ISELED driver was tested with S32K SDK RTM 3.0.0, the following steps need to be proceed in order to update to S32K SDK RTM 3.0.0:

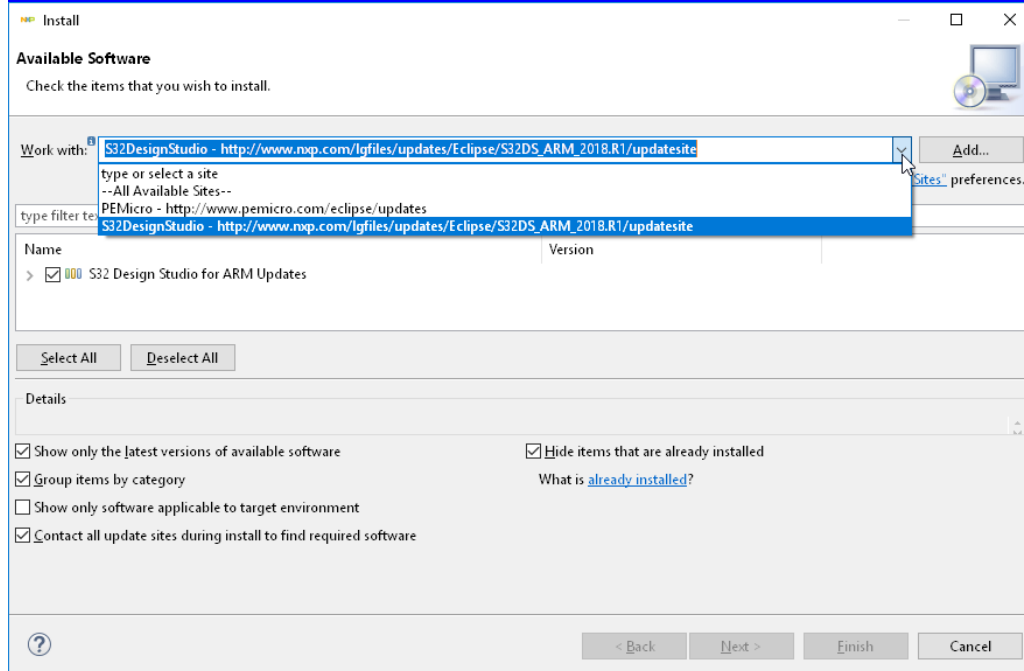
1. Run the S32K Design studio
2. Select Help->Install New Software



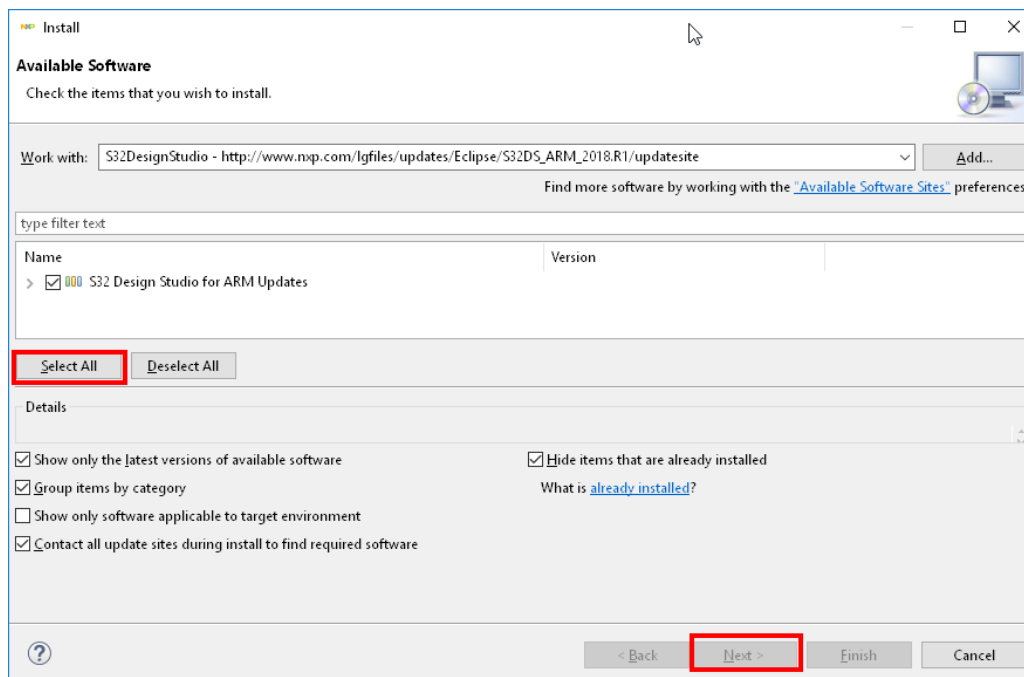


### 3. Select the server for download of the new packages

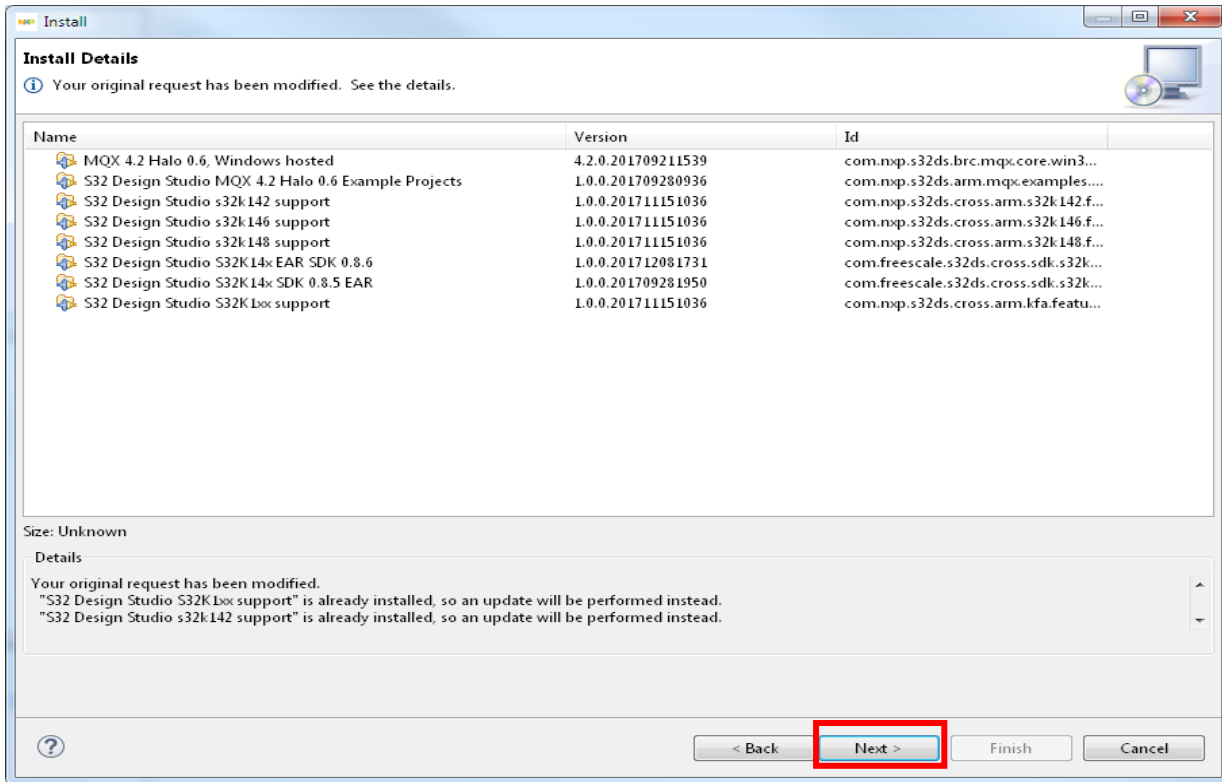
[https://www.nxp.com/lqfiles/updates/Eclipse/S32DS\\_ARM\\_2018.R1/updatesite](https://www.nxp.com/lqfiles/updates/Eclipse/S32DS_ARM_2018.R1/updatesite)



### 4. Click on Select All and then on Next



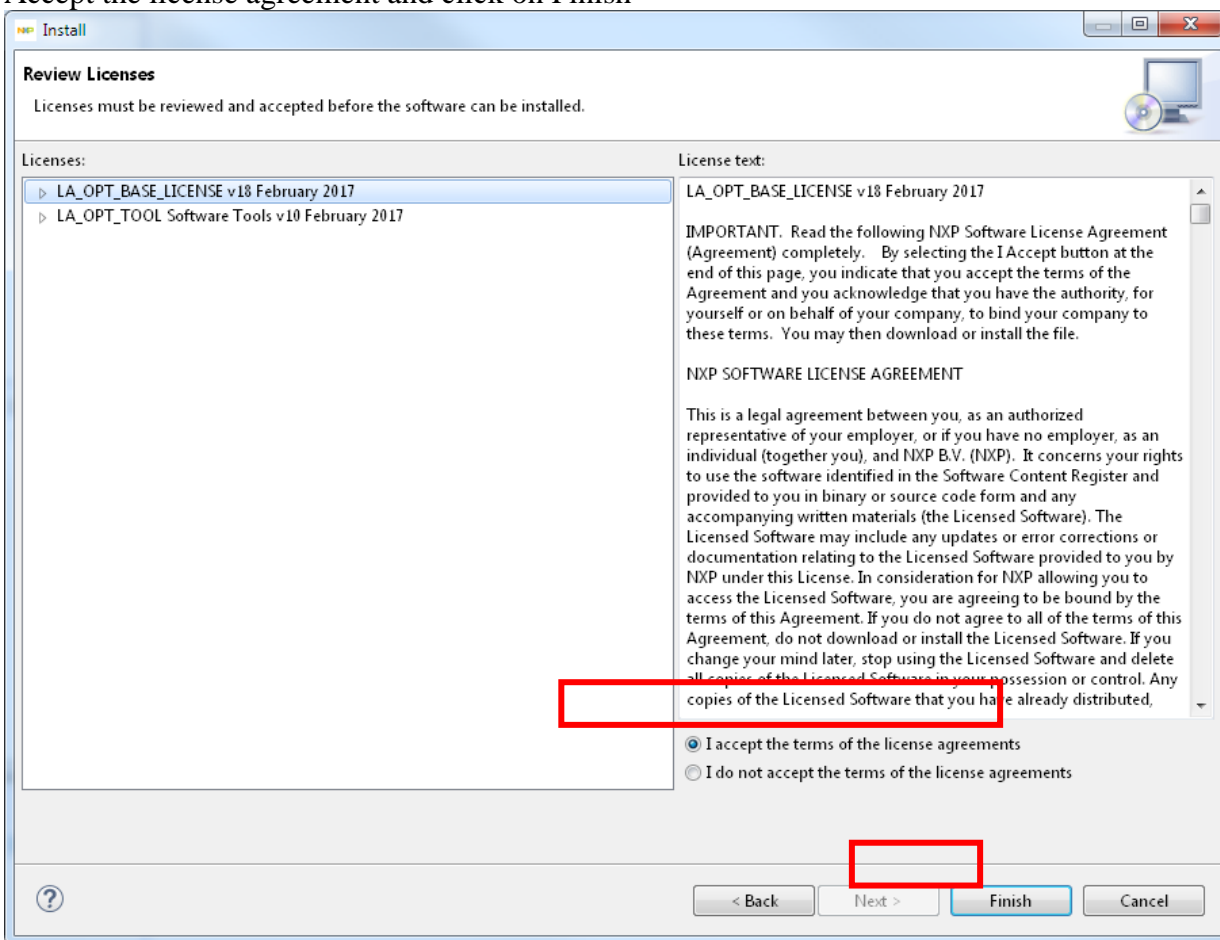
### 5. Click on Next



## NOTE

The list of available packages may differ as new support is added. Please select all S32SDK S32K1xx RTM\_3.0.0 related packages in the list above.

6. Accept the license agreement and click on Finish



7. Wait for installation finish. Once the updates are installed, please proceed to the next stage, download and installation of the S32K SDK ISELED driver, described in next section.

## 4. Installation of S32K SDK ISELED driver

The S32K SDK ISELED driver BETA 3.9.0 provides the user with necessary API to initialize and drive the ISELED LEDs. It provides two options for communication interface, highly effective FlexIO interface and standard LPSPI interface. The S32K SDK ISELED driver is not part of standard S32K SDK installation and a separate download is required from nxp web. Please follow the instructions to proceed:

1. Visit [www.nxp.com/S32K-ISELED](http://www.nxp.com/S32K-ISELED) web page
2. Click [Get Started](#) Tab and Choose Evaluation Path for Non-AUTOSAR

Overview Specifications Buy Documents and Software [Get started](#)

Documents and Software

Get Started with the S32K-ISELED  
Get Started with the S32K-ISELED [Get Started](#)

Get Started with the S32K-ISELED

Jump To

1. Evaluation path
2. Production path

S32K-ISELED Lighting Solution [Buy](#)

**Evaluation path**

Follow these steps if you are NOT using AUTOSAR (for EVALUATION)

Follow these steps if you are using AUTOSAR (for EVALUATION)

3. Download the S32K SDK ISELED driver.

### 5. Download the S32K SDK ISELED driver

NOTE: S32K SDK ISELED driver is not integrated as part of standard S32 SDK installation.

[Download S32K SDK ISELED drive](#)

4. Alternatively, download link could also be found via [www.nxp.com/S32K-ISELED](http://www.nxp.com/S32K-ISELED) Documents and Software Tab.

DOCUMENTS (8)


- Data Sheet (1)
- Fact Sheet (3)
- Reference Manual (2)
- Users Guide (2)

SOFTWARE (8)

- Development Software (1)
- Embedded Software (3)
- Embedded Application Software (4)

S32K MCAL 4.0 ISELED driver RTM 1.0.1 provides the user with necessary API to initialize and drive the ISELED LEDs. It provides two options for communication interface, highly effective FlexIO interface, and standard LPSPi interface. The driver is AUTOSAR 4.0.3 compliant and should be used together with S32K14X MCAL4.0 RTM 1.0.4 (both QM and ISO 26262). Tested with IAR, GreenHills, and GCC compiler. Conditions of use for this software and other general information at [www.autosar.org](http://www.autosar.org) and at AUTOSAR.

2019-06-17 11:44:00 .exe 1 KB SW32K1X-ISL01E\_4\_0



 **S32K SDK ISELED driver (REV 0)** NEW [Download](#)

S32K SDK ISELED driver provides the user with the necessary API to initialize and drive the ISELED LEDs. It offers two options for communication interface, highly effective FlexIO interface, and standard LPSPi interface. Tested with IAR, GreenHills, GCC, Wind River Diab, and ARM compiler.

2019-06-17 15:23:00 .exe 1 KB SW32K1X-AISL01E

- To proceed with the download, the user needs to be logged-in using the user account. In case of new user, please proceed with the Register Now option prior logging into the NXP web page.



ENGLISH   CART

PRODUCTS SOLUTIONS SUPPORT ABOUT

ALL 

Search...



 [Sign In or Register](#)

**Sign In**

Email Address

Password

[Sign in](#)

[Forgot your password?](#)

Don't have an account? [Register Now](#)

#### Having trouble?

If you are having trouble with registration or login, please open a [support request](#).

#### Employees:

**If you have a core ID** (Legacy Freescale employees and new employees hired at a legacy Freescale facility): Log in using your NXP core ID and one!T password.

**If you do NOT have a core ID** (Legacy NXP employees and new employees hired at a legacy NXP facility): Please follow [instructions](#) to activate your nxp.com login, using your WBI ID. (VPN access required for account activation).

- Select Automotive SW – Middleware for General Purpose and Integrated Solutions



Account English

ALL Search...

PRODUCTS APPLICATIONS SUPPORT ABOUT

NXP > Software & Support > Product List

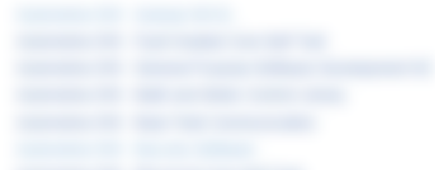
Software & Support

- Product List
- Product Search
- Order History
- Recent Product Releases
- Recent Updates

## Product List

Welcome to the premier delivery, update, and software management service; designed to help you effectively manage your rapidly changing software from a secure, personalized website.

To access an item, select a product below.



[Automotive SW – Middleware for General Purpose and Integrated Solutions](#)

[NXP Software](#)

Licensing

- License Lists
- Offline Activation

FAQ

- Download Help
- Table of Contents
- FAQs

### 7. Select Automotive SW – ISELED Software



Account English Cart

ALL Search...

PRODUCTS APPLICATIONS SUPPORT ABOUT

NXP > Software & Support > Product Information : Automotive SW – Middleware for General Purpose and Integrated Solutions

Software & Support

- Product List
- Product Search
- Order History
- Recent Product Releases
- Recent Updates

## Product Information

### Automotive SW – Middleware for General Purpose and Integrated Solutions

Your choice contains a suite of products. Please select one of the product lines below:  
To register a New Product please click on the button below

[Register](#)

[Automotive SW – ISELED Software](#)

[Automotive SW – Touch Sense Software](#)

Licensing

- License Lists
- Offline Activation

FAQ

- Download Help
- Table of Contents
- FAQs

### 8. Select the SW32K1-ISELED-RTM-3.0.0 or newer package.


[NXP](#) > [Software & Support](#) > [Product Information : Automotive SW - ISELED Software](#)

## Software &amp; Support

- [Product List](#)
- [Product Search](#)
- [Order History](#)
- [Recent Product Releases](#)
- [Recent Updates](#)

## Licensing

- [License Lists](#)
- [Offline Activation](#)

## FAQ

- [Download Help](#)
- [Table of Contents](#)
- [FAQs](#)

## Product Information

### Automotive SW - ISELED Software

To register a New Product please click on the button below

Version	Description	
3.0.0	SW32K1-ISELED-RTM-3.0.0 ISELED middleware stack for control of Digital LEDs using the ISELED protocol.	<a href="#">Download Log</a>

## 9. Accept the Software Terms and Conditions


[NXP](#) > [Software & Support](#) > [Software Terms and Conditions](#)

## Software &amp; Support

- [Product List](#)
- [Product Search](#)
- [Order History](#)
- [Recent Product Releases](#)
- [Recent Updates](#)

## Licensing

- [License Lists](#)
- [Offline Activation](#)

## FAQ

- [Download Help](#)
- [Table of Contents](#)
- [FAQs](#)

## Software Terms and Conditions

### SW32K1-ISELED-RTM-3.0.0

Please read the following agreement and click "I AGREE" at the bottom before downloading your software.

NXP ISELED® SOFTWARE LICENSE AGREEMENT v1.0

IMPORTANT. Read the following NXP ISELED® Software License Agreement ("Agreement") completely. By selecting the "I Accept" button at the end of this page, or by downloading, installing, or using the Software, you indicate that you accept the terms of the Agreement and you acknowledge that you have the authority, for yourself or on behalf of your company, to bind your company to these terms. You may then download or install the file(s). In the event of a conflict between the terms of this Agreement and any license terms and conditions for NXP's proprietary software embedded anywhere in the Software file(s), the terms of this Agreement shall control. If a separate license agreement for the Software has been signed by you or your company and NXP, then that agreement shall govern your use of the Software and shall supersede this Agreement.

This is a legal agreement between your employer, of which you are an authorized representative, or, if you have no employer, you as an individual ("you" or "Licensee"), and NXP Semiconductors Netherlands B.V. on behalf of its affiliates ("NXP"). It concerns your rights to use the NXP ISELED® software provided to you in binary or source code form and any accompanying written materials (the "Software"). The Software may include any updates or error corrections or documentation relating to the Software provided to you by NXP under this Agreement. In consideration for NXP allowing you to access the Software, you are agreeing to be bound by the terms of this Agreement. If you do not agree to all of the



## 10. Download the SCR, Release notes and installation package by selecting the packages



Software & Support

- Product List
- Product Search
- Order History
- Recent Product Releases
- Recent Updates

## Product Download

SW32K1-ISELED-RTM-3.0.0

Files License Keys Notes

[Download Help](#)

Show All Files

3 Files

<input type="checkbox"/>	+	File Description	File Size	File Name
<input checked="" type="checkbox"/>		S32K1_ISELED_RTM_3.0.0.exe	1.5 MB	<a href="#">S32K1_ISELED_RTM_3.0.0.exe</a>
<input checked="" type="checkbox"/>		S32K1_ISELED_RTM_3.0.0_ReleaseNotes.pdf	602.6 KB	<a href="#">S32K1_ISELED_RTM_3.0.0_ReleaseNotes.pdf</a>
<input checked="" type="checkbox"/>		S32K1_ISELED_RTM_3.0.0_SCR.xls	10.4 KB	<a href="#">S32K1_ISELED_RTM_3.0.0_SCR.xls</a>

Download Selected Files

Licensing

- License Lists
- Offline Activation

FAQ

- Download Help
- Table of Contents
- FAQs

11. Generate the license file for the S32K SDK ISELED driver by selecting the License Keys tab.



Software & Support

- Product List
- Product Search
- Order History
- Recent Product Releases
- Recent Updates

## Product Download

SW32K1-ISELED-RTM-3.0.0

Files License Keys Notes

[Download Help](#)

Show All Files

3 Files

<input type="checkbox"/>	+	File Description	File Size	File Name
<input checked="" type="checkbox"/>		S32K1_ISELED_RTM_3.0.0.exe	1.5 MB	<a href="#">S32K1_ISELED_RTM_3.0.0.exe</a>
<input checked="" type="checkbox"/>		S32K1_ISELED_RTM_3.0.0_ReleaseNotes.pdf	602.6 KB	<a href="#">S32K1_ISELED_RTM_3.0.0_ReleaseNotes.pdf</a>
<input checked="" type="checkbox"/>		S32K1_ISELED_RTM_3.0.0_SCR.xls	10.4 KB	<a href="#">S32K1_ISELED_RTM_3.0.0_SCR.xls</a>

Download Selected Files

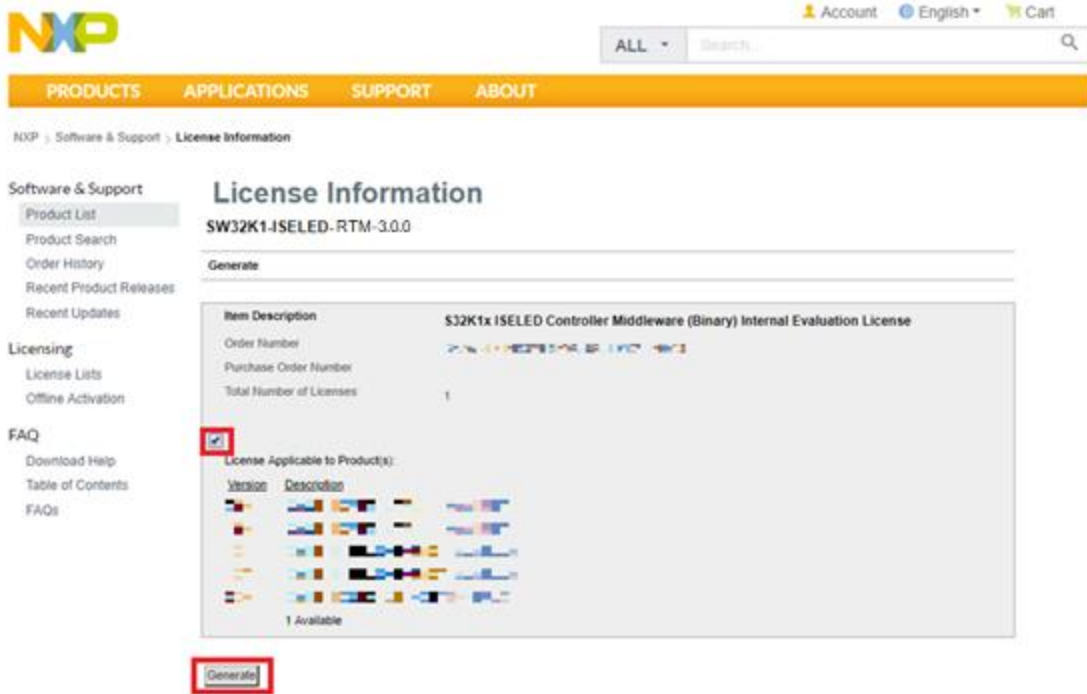
Licensing

- License Lists
- Offline Activation

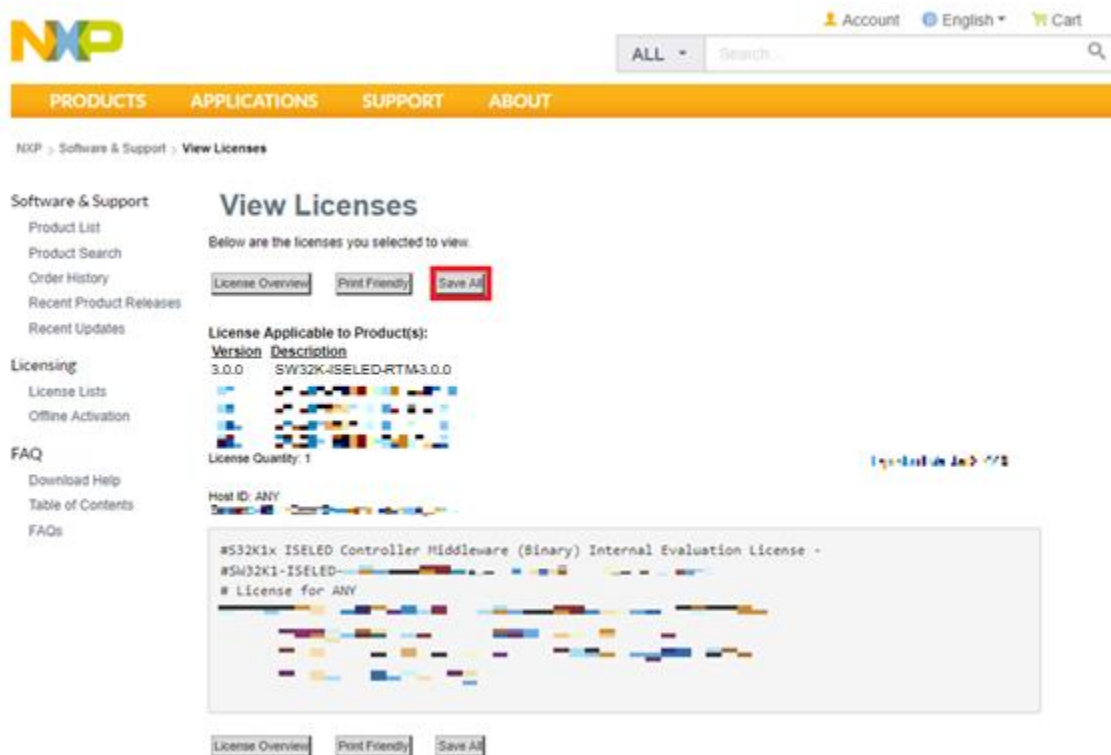
FAQ

- Download Help
- Table of Contents
- FAQs

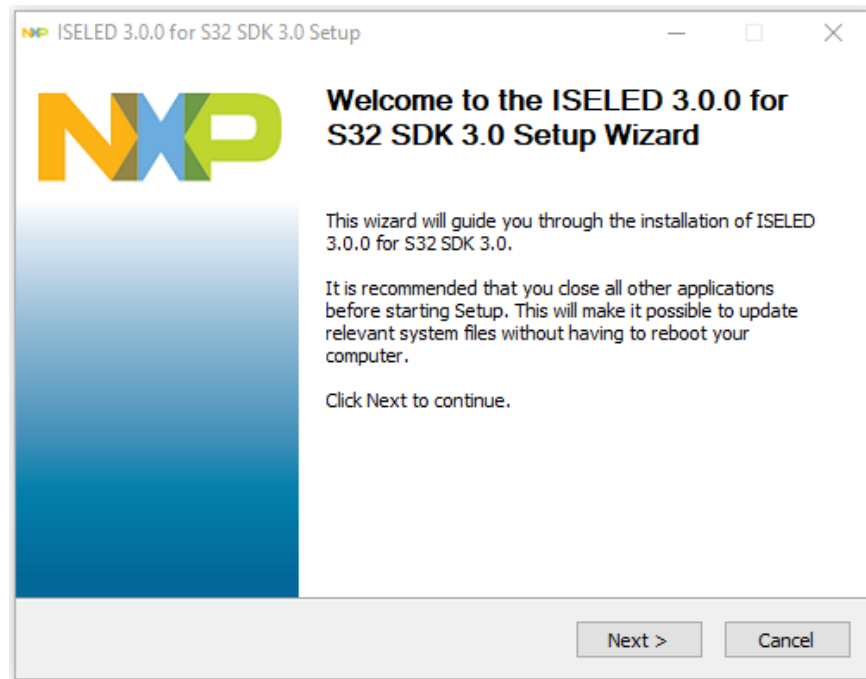




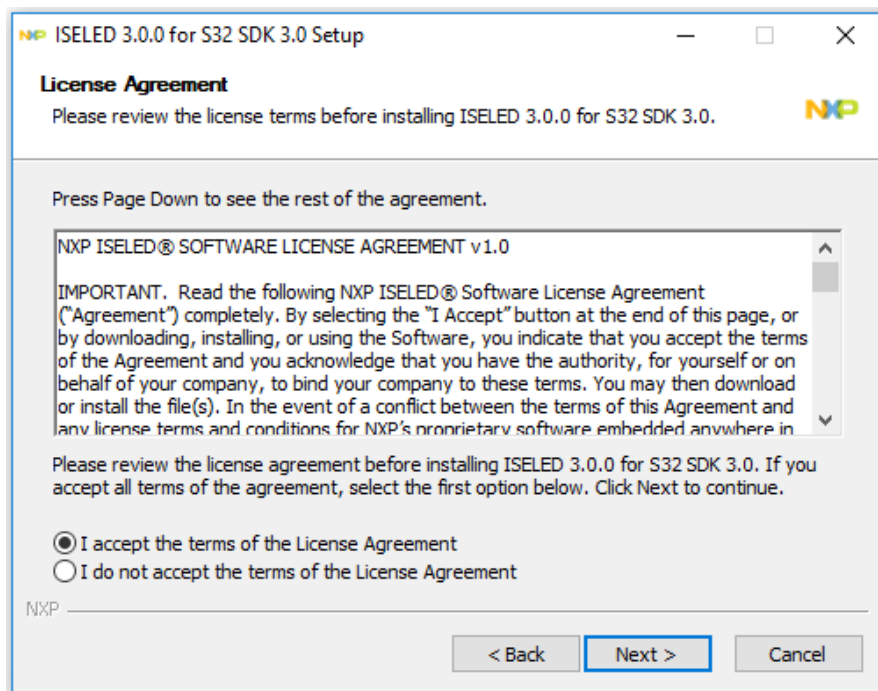
12. Store the license file on your computer. Use this license file during the installation of the NXP S32K ISELED Driver. Important: the S32SDK\_S32K1xx\_RTM\_3.0.0 installation directory must be selected for the NXP S32K ISELED Driver installation.



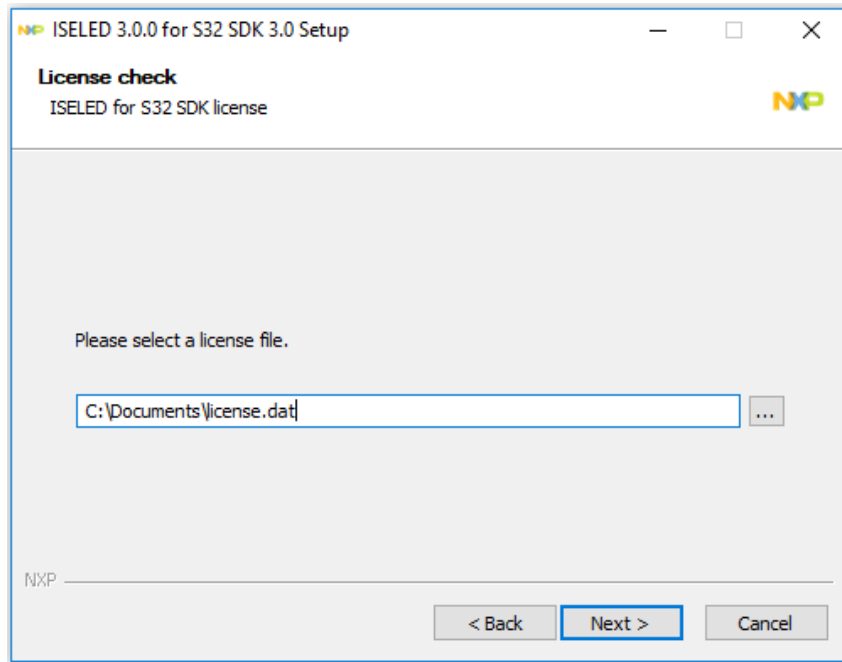
13. Run the ISELED Driver installer and click “Next”



14. Accept the terms of the License Agreement and continue

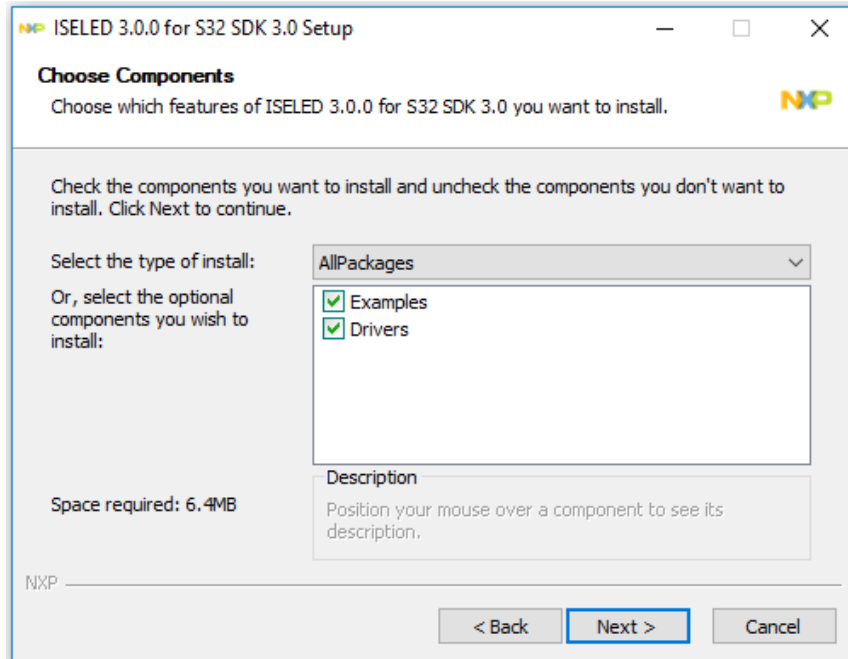


## 15. Select the license file that was saved previously

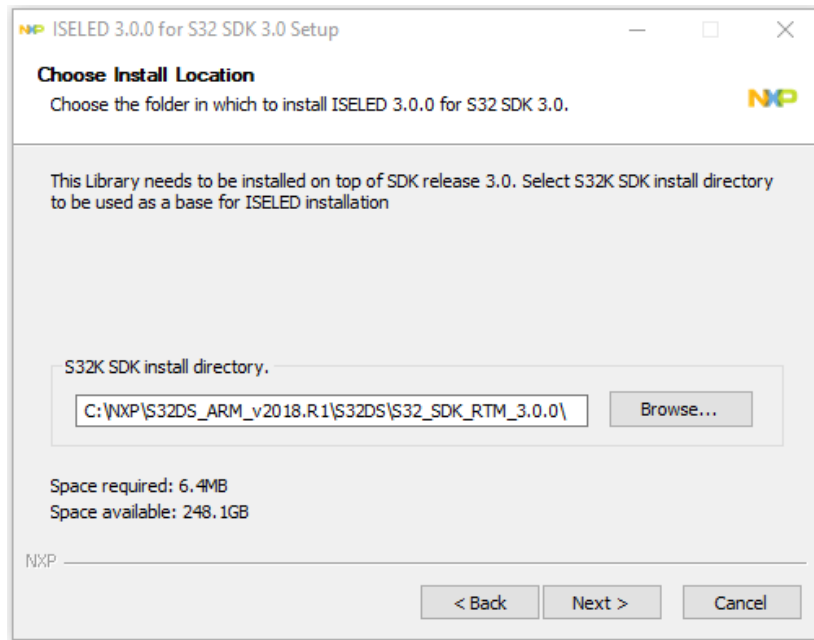


16. If the license expires, please contact [gpis.software@nxp.com](mailto:gpis.software@nxp.com) or your NXP sales representative and ask for an Activation Code to register the software

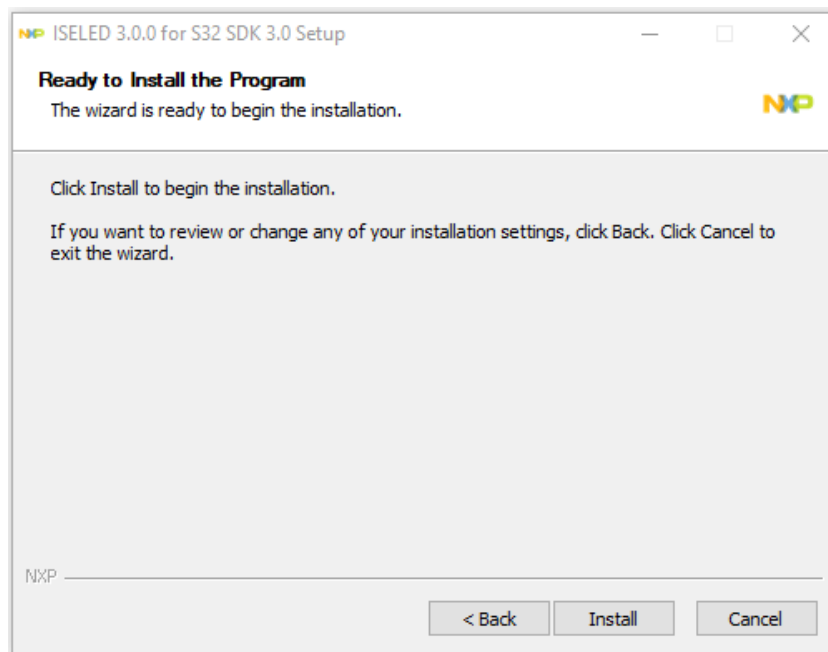
## 17. Select the components for the installation



18. Select the installation path. Make sure that the installation path is the same as the S32K SDK BETA 3.9.0 installation folder



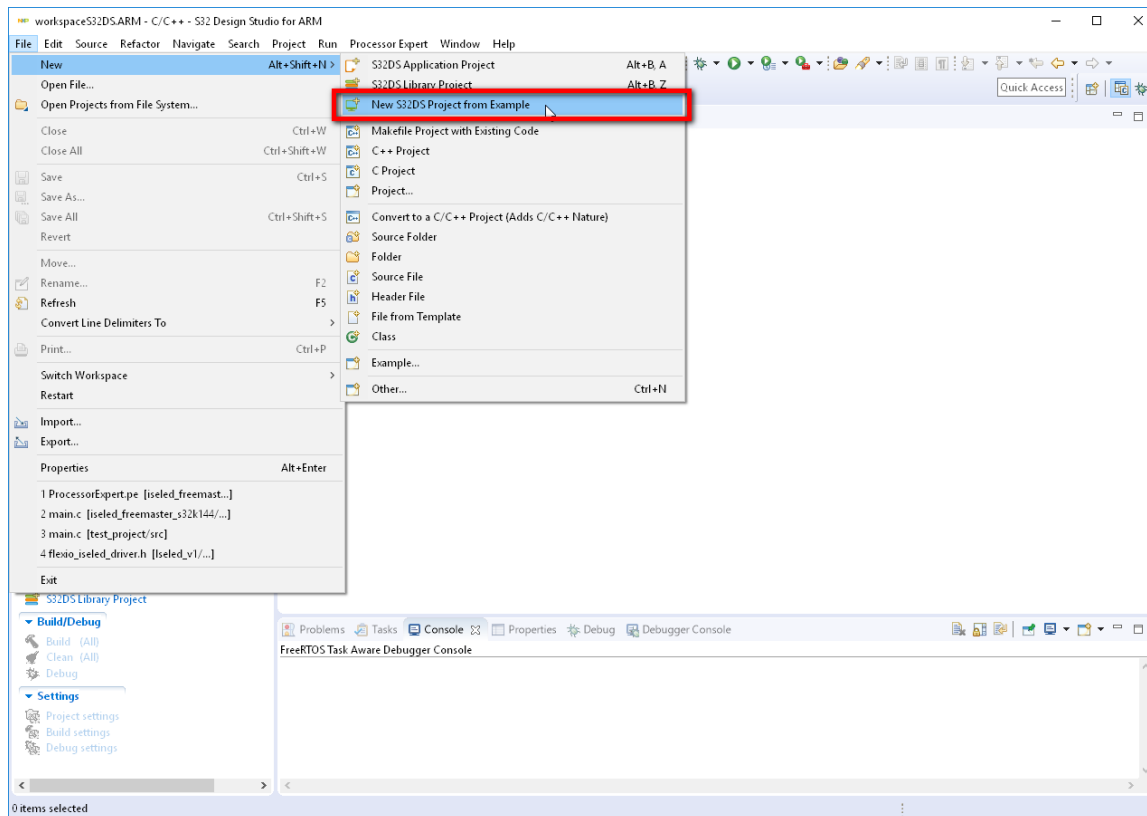
19. Finally click Install to start the setup



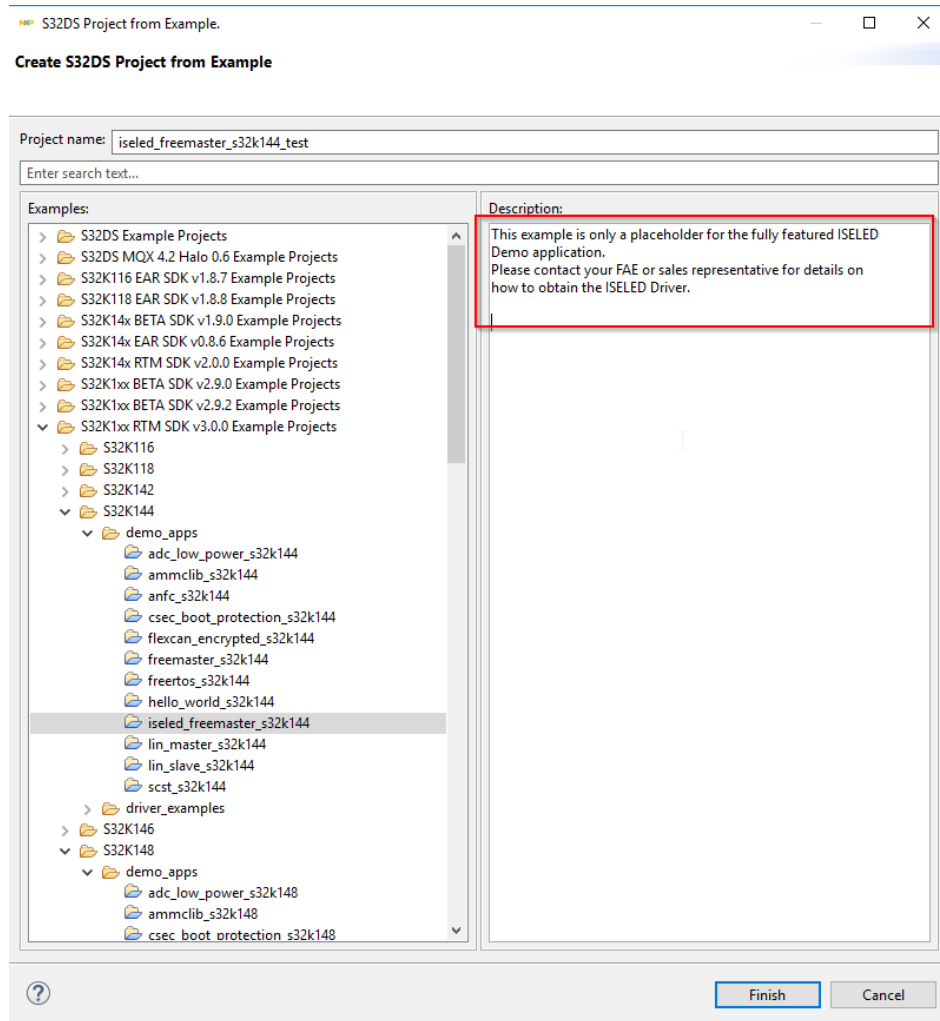
## 5. Troubleshooting

To verify the ISELED Driver installation please follow the next steps:

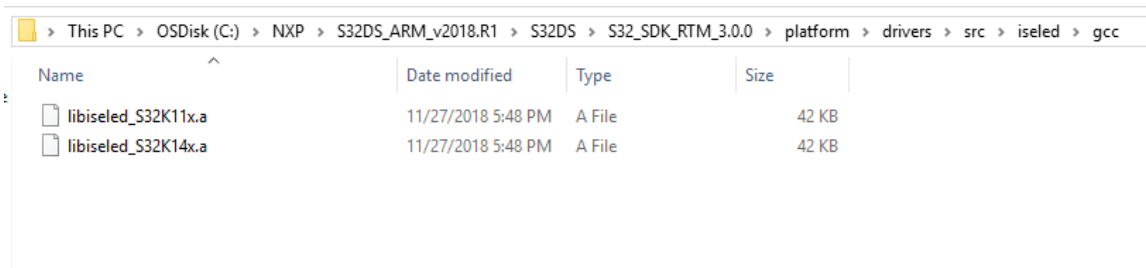
1. Start the S32 Design studio and select New S32DS Project from Example in File menu.



2. If the description of the ISELED Driver example application states that the example is a placeholder, it means that the installation path for the ISELED Driver did not match the S32K SDK BETA 3.9.0 installation folder. Please see step 3.16.

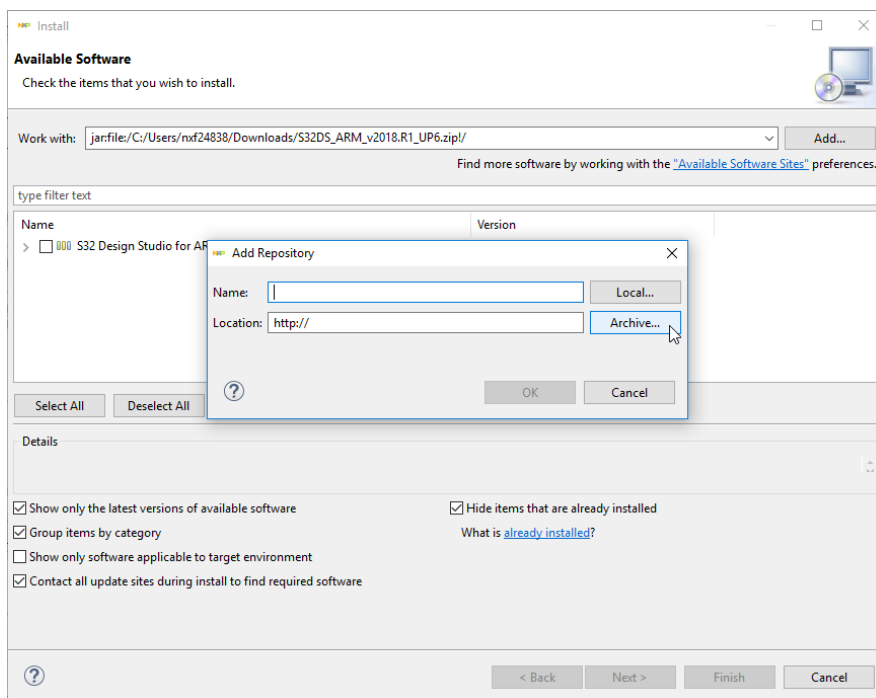


- Another way to verify the ISELED Driver installation is to check if the ISELED libraries are present in the S32K SDK BETA 3.9.0 installation folder

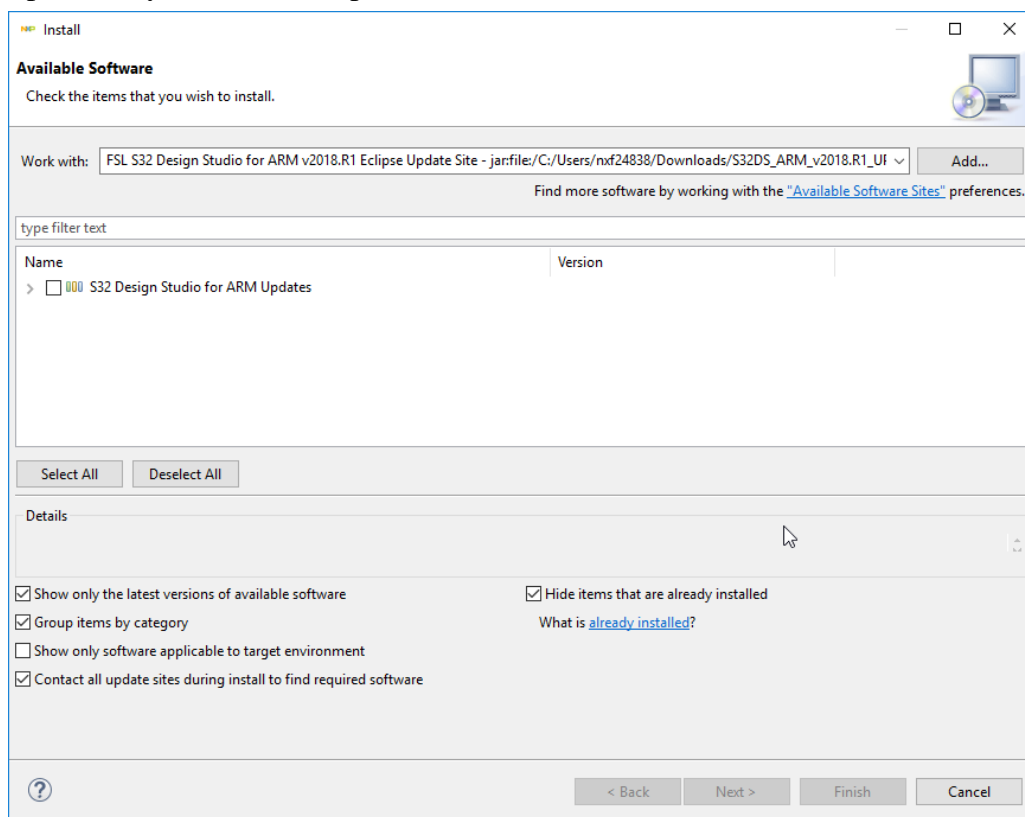


- In the case that the S32DesignStudio - [http://www.nxp.com/lqfiles/updates/Eclipse/S32DS\\_ARM\\_2018.R1/updatesite](http://www.nxp.com/lqfiles/updates/Eclipse/S32DS_ARM_2018.R1/updatesite) is not reachable, the SDK can be manually installed.
- Download the update package from Updated/Patches (for ADM S32DS - [https://www.nxp.com/support/developer-resources/run-time-software/s32-design-studio-ide/s32-design-studio-ide-for-arm-based-mcus:S32DS-ARM?&tab=Design\\_Tools\\_Tab](https://www.nxp.com/support/developer-resources/run-time-software/s32-design-studio-ide/s32-design-studio-ide-for-arm-based-mcus:S32DS-ARM?&tab=Design_Tools_Tab)

6. In Design Studio click on Help -> Install new software and choose Add -> Archive



7. Select the previously downloaded update ZIP file and continue with the Next button



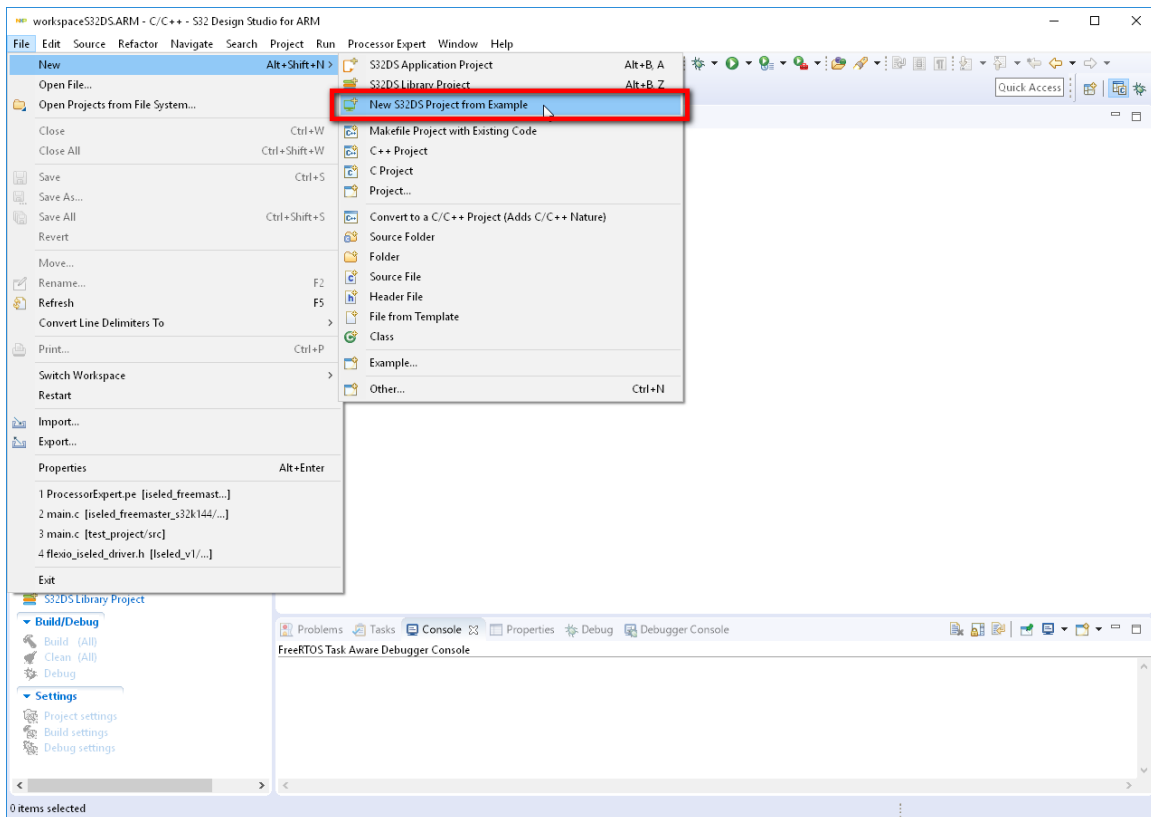
## 6. Starting from S32K SDK ISELED example application

The S32K SDK ISELED driver is provided with the example application. The example application uses FreeMASTER SW component from NXP, used for data visualization and operation of project flow. In case the FreeMASTER SW component is not installed on your computer, please visit the [www.nxp.com/freemaster](http://www.nxp.com/freemaster) website to download the installation package of the FreeMASTER component.

For a detailed description of the ISELED Driver example application, please refer to the ISELED\_UserGuide document that can be found in the installation path under the “doc” folder.

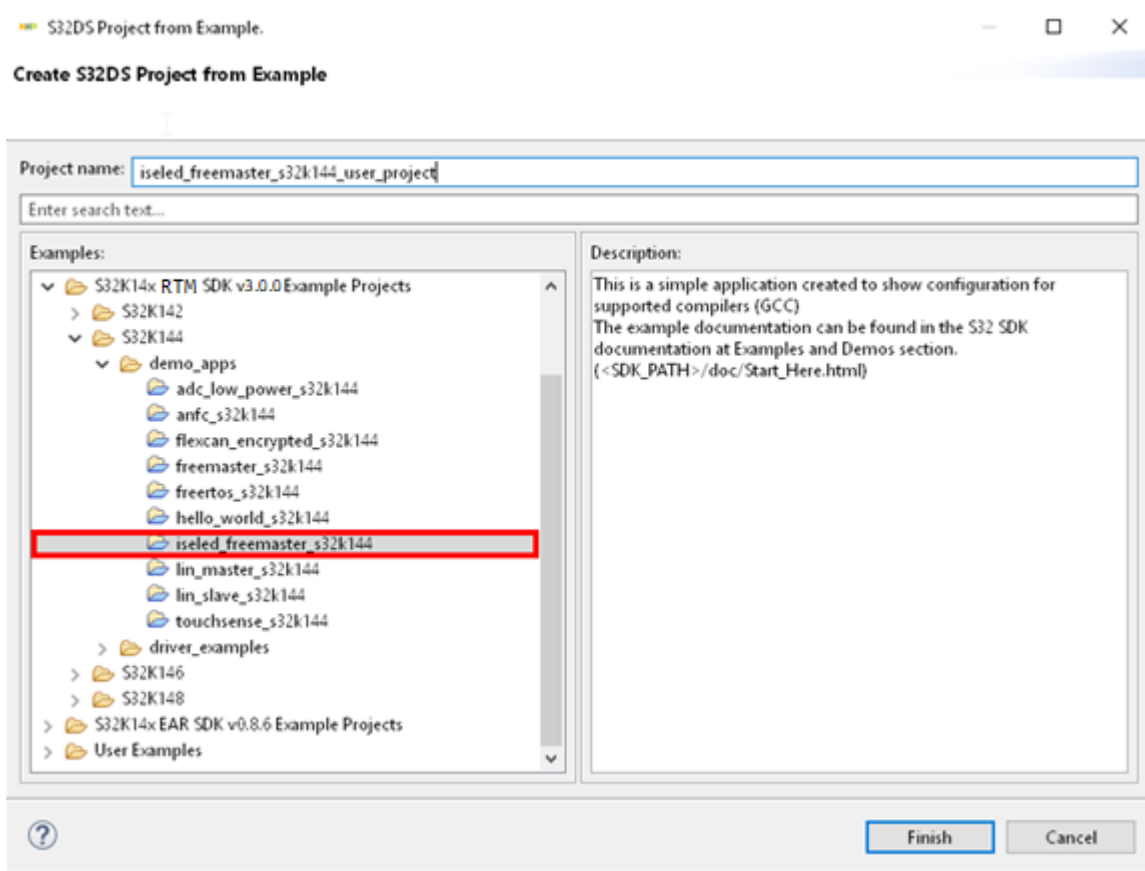
To start the user application based on this example, please follow these instructions:

1. Start the S32 Design studio and select New S32DS Project from Example in File menu.

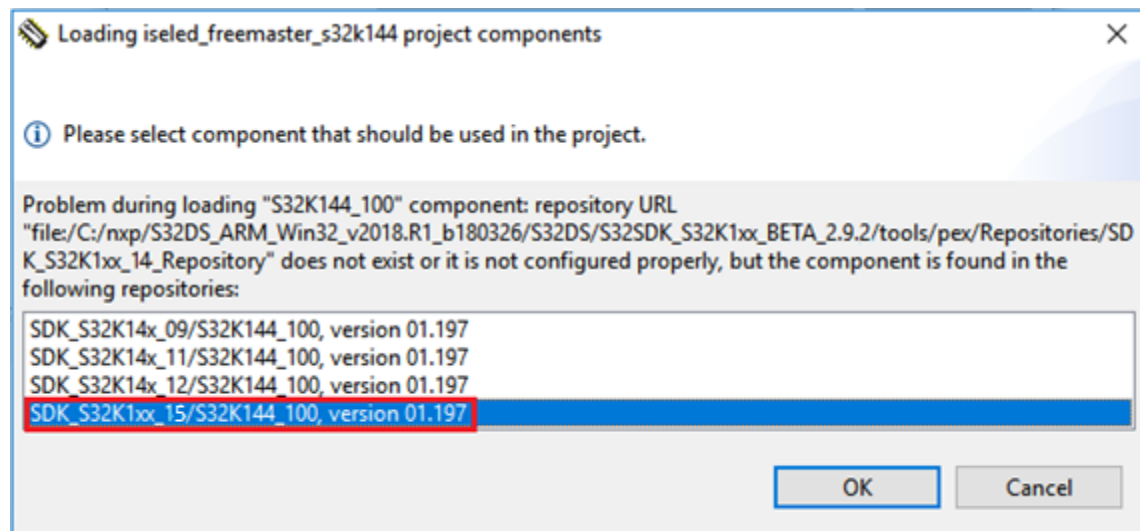


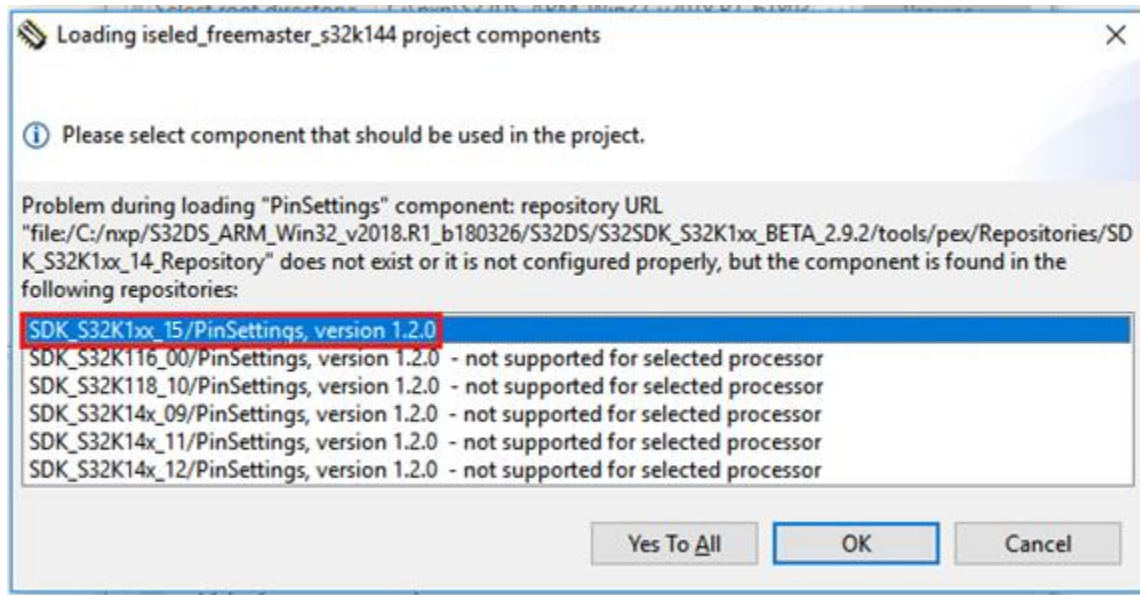
2. Select the iseled\_freemaster\_s32k144 example application from the S32K144 examples list.



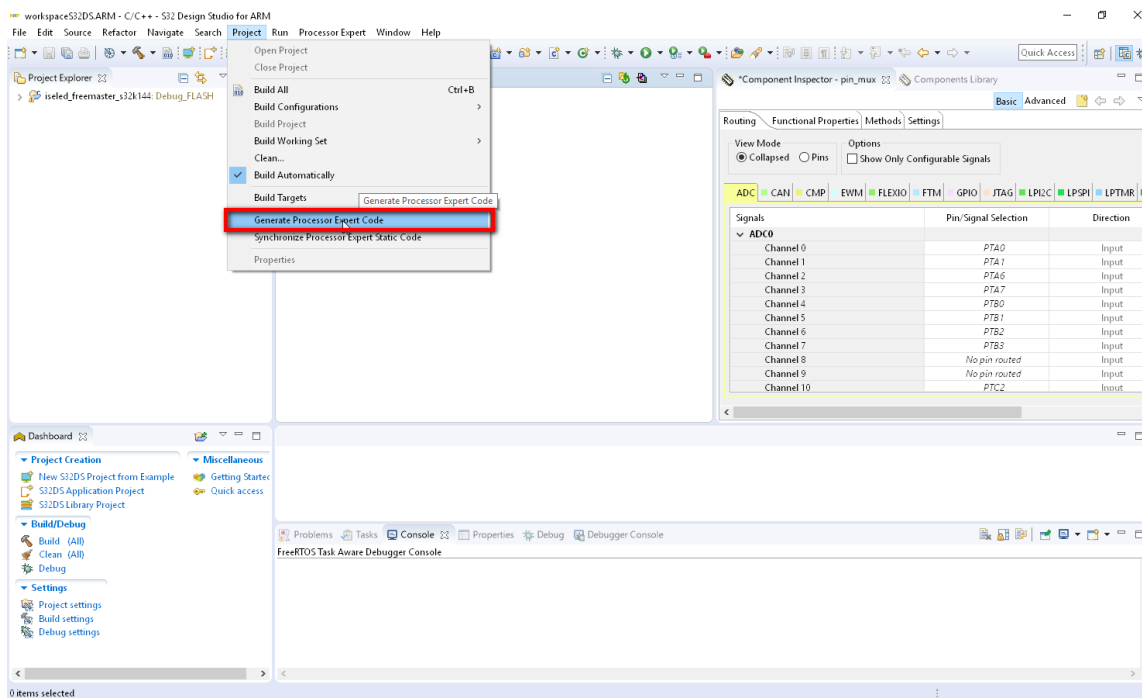


- In case the pop-up window is displayed, select the SDK\_S32K1xx\_15 components repository.

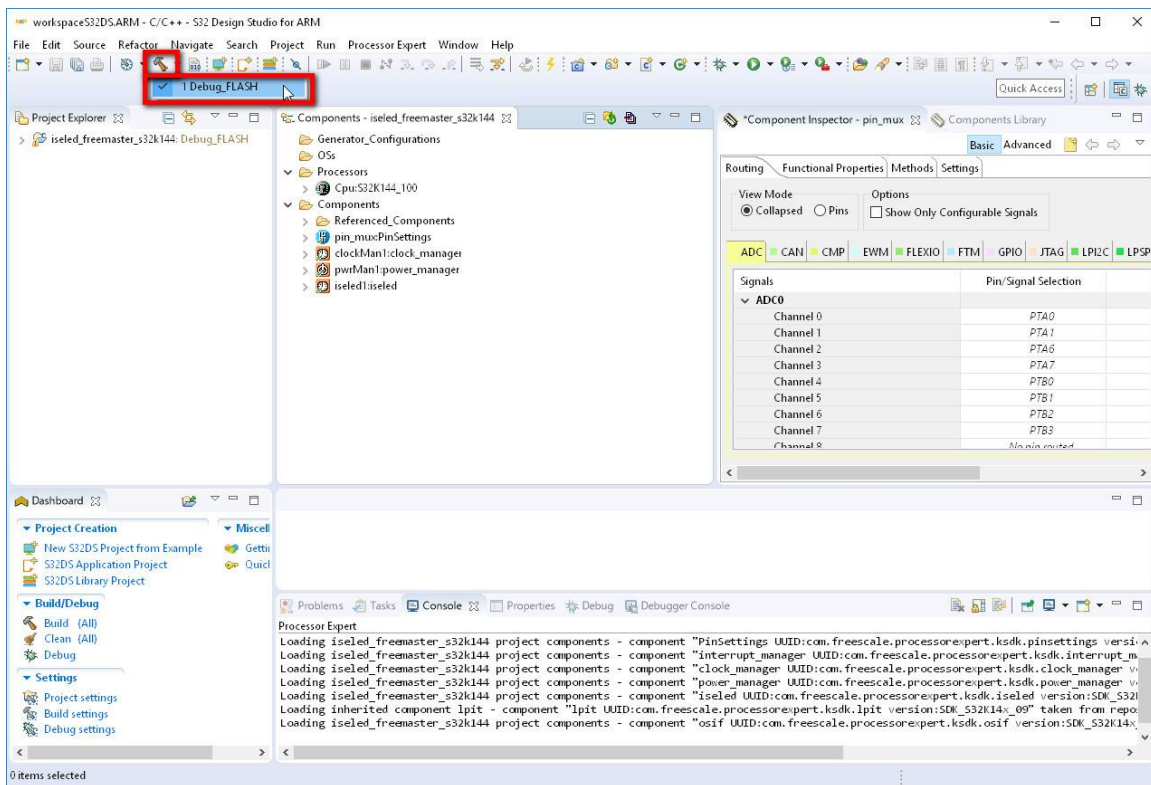




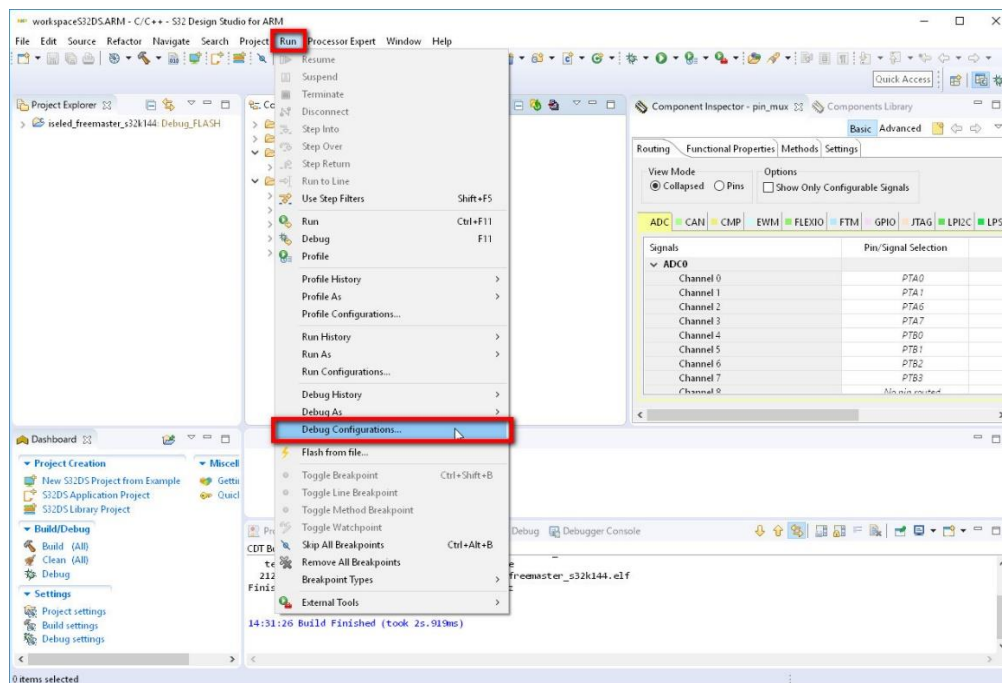
4. Generate the Processor Expert Code by selecting the option in Project menu and wait for the code generation to be completed before continuing.

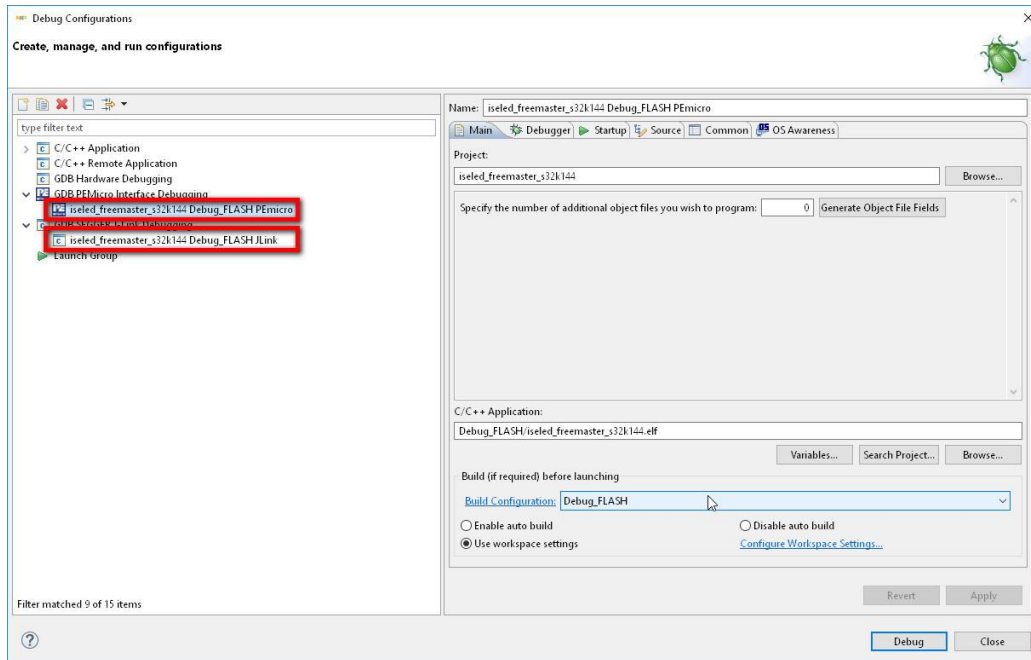


- Build the project by selecting the build command from the menu bar and selecting the Debug\_FLASH option.



- Choose the debugging option by selecting Run menu and Debug Configuration item. Here you can select the Debug interface option.





For more details about the S32K SDK ISELED driver, please open the driver documentation, stored in the installation folder.

For a detailed description of the ISELED Driver example application please read the ISELED\_UserGuide document that can be found in the installation path under the “doc” folder.

### NOTE

The S32K SDK ISELED example project is using FreeMASTER SW component from NXP, used for data visualization and operation of project flow. In case the FreeMASTER SW component is not installed on user computer, please visit the [www.nxp.com/freemaster](http://www.nxp.com/freemaster) to download the installation of the FreeMASTER component.



**How to Reach Us:**

**Home Page:**

[nxp.com](http://nxp.com)

**Web Support:**

[nxp.com/support](http://nxp.com/support)

Information in this document is provided solely to enable system and software implementers to use NXP products. There are no express or implied copyright licenses granted hereunder to design or fabricate any integrated circuits based on the information in this document. NXP reserves the right to make changes without further notice to any products herein.

NXP makes no warranty, representation, or guarantee regarding the suitability of its products for any particular purpose, nor does NXP assume any liability arising out of the application or use of any product or circuit, and specifically disclaims any and all liability, including without limitation consequential or incidental damages. "Typical" parameters that may be provided in NXP data sheets and/or specifications can and do vary in different applications, and actual performance may vary over time. All operating parameters, including "typicals," must be validated for each customer application by customer's technical experts. NXP does not convey any license under its patent rights nor the rights of others. NXP sells products pursuant to standard terms and conditions of sale, which can be found at the following address: [nxp.com/SalesTermsandConditions](http://nxp.com/SalesTermsandConditions).

While NXP has implemented advanced security features, all products may be subject to unidentified vulnerabilities. Customers are responsible for the design and operation of their applications and products to reduce the effect of these vulnerabilities on customer's applications and products, and NXP accepts no liability for any vulnerability that is discovered. Customers should implement appropriate design and operating safeguards to minimize the risks associated with their applications and products.

NXP, the NXP logo, NXP SECURE CONNECTIONS FOR A SMARTER WORLD, COOLFLUX, EMBRACE, GREENCHIP, HITAG, I2C BUS, ICODE, JCOP, LIFE VIBES, MIFARE, MIFARE CLASSIC, MIFARE DESFire, MIFARE PLUS, MIFARE FLEX, MANTIS, MIFARE ULTRALIGHT, MIFARE4MOBILE, MIGLO, NTAG, ROADLINK, SMARTLX, SMARTMX, STARPLUG, TOPFET, TRENCHMOS, UCODE, Freescale, the Freescale logo, AltiVec, C 5, CodeTEST, CodeWarrior, ColdFire, ColdFire+, C Ware, the Energy Efficient Solutions logo, Kinetis, Layerscape, MagniV, mobileGT, PEG, PowerQUICC, Processor Expert, QorIQ, QorIQ Qonverge, Ready Play, SafeAssure, the SafeAssure logo, StarCore, Symphony, VortiQa, Vybrid, Airfast, BeeKit, BeeStack, CoreNet, Flexis, MXC, Platform in a Package, QUICC Engine, SMARTMOS, Tower, TurboLink, and UMEMS are trademarks of NXP B.V. All other product or service names are the property of their respective owners. ARM, AMBA, ARM Powered, Artisan, Cortex, Jazelle, Keil, SecurCore, Thumb, TrustZone, and  $\mu$ Vision are registered trademarks of ARM Limited (or its subsidiaries) in the EU and/or elsewhere. ARM7, ARM9, ARM11, big.LITTLE, CoreLink, CoreSight, DesignStart, Mali, mbed, NEON, POP, Sensinode, Socrates, ULINK and Versatile are trademarks of ARM Limited (or its subsidiaries) in the EU and/or elsewhere. All rights reserved. Oracle and Java are registered trademarks of Oracle and/or its affiliates. The Power Architecture and Power.org word marks and the Power and Power.org logos and related marks are trademarks and service marks licensed by Power.org.

Document Number: S32KSDKISELEDRTMUG  
Rev. 1  
09/2019

